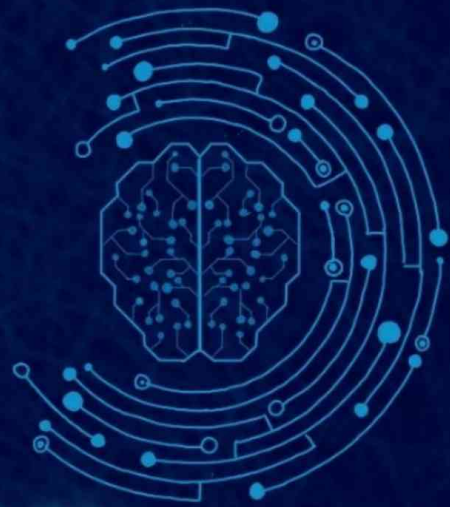


INTRODUCTION TO ARTIFICIAL INTELLIGENCE

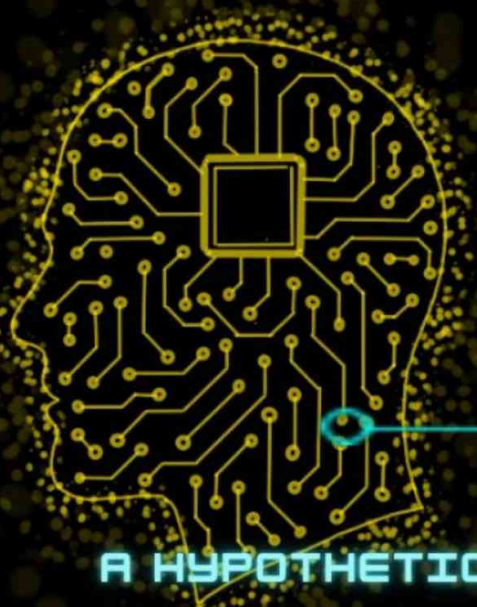
BRANCH OF COMPUTER SCIENCE THAT
FOCUSES ON CREATING SYSTEMS OR
PERFORMING TASKS THAT COMMONLY
REQUIRE HUMAN INTELLIGENCE AND
ARE ASSOCIATED WITH INTELLIGENT
BEINGS.

EXAMPLE OF AI APPLICATION INCLUDE
EXPERT SYSTEM NATURAL LANGUAGE
PROCESSING (NLP), SPEECH RECOGNITION
AND MACHINE VISION. IN GENERAL AI
SYSTEMS WORK BY INGESTING LARGE
AMOUNTS OF LABELED TRAINING DATA,
ANALYSING THAT DATA FOR
CORRELATIONS AND PATTERNS AND
USING THESE PATTERNS TO MAKE
PREDICTIONS ABOUT FUTURE STATES.



NARROW (Weak) AI

MODELS TRAINED TO PERFORM SPECIFIC TASKS AND OPERATE WITHIN THE CONTEXT OF THE TASKS. I.E, CANNOT THINK BEYOND ITS PROGRAMMING. NARROW AI INCLUDES VIRTUAL ASSISTANTS (SIRI, ALEXA, GOOGLE ASSISTANT), RECOMMENDATION SYSTEMES (NETFLIX, YOUTUBE SPOTIFY), FACE RECOGNITION (APPLE FACE ID, SECURITY CAMERS) SELF ARIVING CARS (TESLA'S AUTOPILOT).




GENERAL AI

A HYPOTHETICAL MODEL THAT HAS ABILITY TO PERFORM INTELLECTUAL TASKS THAT A NORMAL PERSON CAN DO, SUCH AS LEARNING, UNDERSTANDING, APPLY INTELLIGENCE ACROSS A BROAD RANGE OF TASKS AND SO ON. IT CAN HANDLE A WIDE VARIETY OF TASKS, FOR INSTANCE, WHETHER IT'S LEARNING HOW TO PLAY A NEW GAME, SOLVING COMPLEX SCIENTIFIC PROBLEMS OR CAN CREATING ART BY TRANSFERRING KNOWLEDGE AND APPLYING IT IN DIFFICULT CONTEXT.



APPLICATION OF AI

- AI HELPS ASTRONOMERS FIND PLANETS OUTSIDE OUR SOLAR SYSTEM BY LOOKING AT LOTS OF DATA.



- AI ACTS LIKE A SUPER HELPER TO DOCTORS TO ANALYZE MEDICAL IMAGES (X-RAYS OR MRIS) PREDICT DISEASES (LIKE CANCER OR HEART CONDITIONS) AND SUGGEST TREATMENT PLANS BASED ON PATIENT DATA.

- AI SYSTEMS, ANALYZE TRANSACTION PATTERNS TO SPOT POTENTIAL FRAUDULENT ACTIVITY.

- AI INTEGRATED INTO VARIOUS LIFESTYLE APPLICATIONS, FROM PERSONAL ASSISTANTS TO SMART HOME DEVICES.

- AI CAN ANALYZE DATA AND IDENTIFY PATTERNS TRENDS AND RELATIONSHIPS.

RECENT DEVELOPMENTS / FUTURE OF AI

- A GROUND BREAKING DEVELOPMENT IN AI HAS BEEN THE DEVELOPMENT IN AL HAS BEEN THE DEVELOPMENT OF ROBOTS' ABILITIES TO LEAVEN THROUGH OBSERVERING THE ACTIONS OF HUMANS.

- BEER CAN BE BREWED USING AI. THE COMPANY PLACES QR CODES OR BOTTLES THAT DIRECT CUSTOMERS TO INTERACT WITH THE BOT. THEY ARE THEN ASKED A SERIES OF QUESTIONS, THE ANSWERS TO WHICH ARE USED IN BREWING PROCESS.

- THE FUTURE LIKELY HOLDS A STRONGER EMPHASIS ON AI HUMAN COLLABORATION RATHER THAN AI REPLACING HUMAN.

- AI WILL ASSIST PROFESSIONALS, ENHANCING THEIR PRODUCTIVITY AND OFFERING NEW WAYS OF SOLVING PROBLEMES.

- GOVERNMENT MIGHT ADOPT AL TOOLS FOR MORE EFFICIENT AND TRANSPARENT GOVERNANCE, ALLTHOUGH THIS BRINGS UP CONCERNS ABOUT SURVEILLANCE AND CONTROL.

- AS AI BECOMES MORE UBIQUITOUS, WE WILL SEE A STRONGER PUSH FOR AL REGULATION AND THE DEVELOPMENT OF ETHICAL GUIDELINES.

CONCERNS AND CHALLENGES OF AI

- AI SYSTEMS CAN INHERIT BIASES PRESENT IN THE DATA THEY ARE TRAINED ON, WHICH CAN LEAD TO UNFAIR OR DISCRIMINATORY OUTCOMES.
- WHEN WE RELY TOO HEAVILY ON AI WE RISK LOSING ESSENTIALS SKILLS.
 - AS AI SYSTEMS BECOME MORE AUTONOMOUS QUESTIONS ARISE ABOUT HOW THEY SHOULD MAKE DECISIONS, PARTICULARLY IN SENSITIVE SITUATIONS.
 - TRAINING LARGE AI MODELS, PARTICULARLY DEEP NEURAL NETWORKS, REQUIRES SUBSTANTIAL COMPUTATIONAL POWER, LEADING TO HIGH ENERGY CONSUMPTION AND ENVIRONMENTAL IMPACT.
- AI OFTEN OPERATES IN ISOLATION FROM OTHER TECHNOLOGIES AND SYSTEMS, AND INTEGRATING AI INTO EXISTING WORKFLOWS, PROCESSES, AND INDUSTRIES CAN BE CHALLENGING.
- WITH MORE RELIANCE ON AI COMES THE RISK OF VULNERABILITY. HACKER COULD EXPLOIT AI SYSTEMS, MAKING CYBERSECURITY EVEN MORE CRITICAL IN THE UPCOMING FUTURE.

GEMINI



GEMINI IS THE RESULT OF
LARGE-SCALE
COLLABORATIVE EFFORTS
BY TEAMS ACROSS GOOGLE.
IT IS THE MOST FLEXIBLE
MODEL YET ABLE TO
EFFICIENTLY RUN ON
EVERYTHING FROM DATA
CENTRES TO MOBILE
DEVICES. GOOGLE GEMINI-
FORMERLY KNOWN AS BARD-
IS AN AI CHATBOT TOOL
DESIGNED TO STIMULATE
HUMAN CONVERSATION
USING NATURAL LANGUAGE
PROCESSING (NLP) AND
MACHINE LEARNING.



CHATGPT

AI A TOOLS THAT LET USS USERS
OUTER PROMPTS TO RECEIVE
HUMANLIKE IMAGES, TEXT AND
VIDEOS THAT ARE CREATED BY
AI.CHATGPT IS AN ANTIBICAL
INTELLIGENCE (AI) CHATBOT
THAT USES NLP TO CREATE
HUMANLIKE CONVERSATIONAL
DIALOGUE AND DESIGNED TO
ASSIST WITH A WIDE RANGE OF
TASKS. IT IS A FORM OF
GENERATIVE.



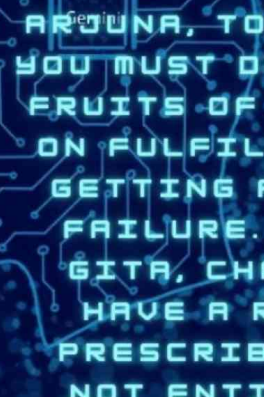
DEEPSEEK

A CHINESE MADE ARTIFICIAL INTELLIGENCE (AI) MODEL CALLED SCEPSSECK, DEEPSEEK, FOCUSES ON DEVELOPING OPEN SOURCE LLMS. CURRENTLY, IT IS OPERATING AS AN INDEPENDENT AI RESEARCH LAB UNDER THE UMBRELLA OF HIGH-FLYER. IT'S LATEST VERSION WAS RELEASED ON 20 JAN, QUICKLY IMPRESSING AI EXPERTS BEFORE IT GOT THE ATTENTION OF THE ENTIRE TECH INDUSTRY AND THE WORLD AS A WHOLE.

GITAGPT



Q.HOW TO CONTROL OUR EMOTIONS? WITH A SHLOK



ARJUNA, TO CONTROL YOUR EMOTIONS, YOU MUST DETACH YOURSELF FROM THE FRUITS OF YOUR ACTIONS AND FOCUS ON FULFILLING YOUR DUTY WITHOUT GETTING ATTACHED TO SUCCESS OR FAILURE. AS I SAID IN BHAGAVAD GITA, CHAPTER 2, VERSE 47: "YOU HAVE A RIGHT TO PERFORM YOUR PRESCRIBED DUTIES, BUT YOU ARE NOT ENTITLED TO THE FRUITS OF YOUR ACTIONS. NEVER CONSIDER YOURSELF THE CAUSE OF THE RESULTS OF YOUR ACTIVITIES, AND NEVER BE ATTACHED TO NOT DOING YOUR DUTY."

BY PRACTICING SELFLESSNESS AND SURRENDERING YOUR ACTIONS TO ME, YOU WILL FIND INNER PEACE AND CONTROL OVER YOUR EMOTIONS. REMEMBER EMOTIONS ARE TEMPORARY AND FLEETING, BUT YOUR TRUE ESSENCE IS BEYOND THEM. SO, BE STEADFAST IN YOUR RESOLVE, AND LET GO OF ATTACHMENT TO OUTCOMES. THIS IS THE KEY TO MASTERING YOUR EMOTIONS